

# Wake up Your Body

LOOP CHAIR

D00237

New and  
Innovative  
Design





# Clean Lines, Well-balanced Proportion



Claudio Francesco Bellini (1963) is living and working in Milan, where he graduated in Architecture and Industrial design at the renowned Politecnico university in 1990.

His strong fascination with creativity, is rooted in his early childhood years, inspired by his father Mario Bellini, whom counts as one of the most affluent figures in design history.

Today Claudio Bellini Design, recognized as one of the most influential European studios, is active within several fields of design, ranging from furniture to product and architecture, collaborating with leading companies worldwide including Walter Knoll; Steelcase; Poltrona Frau; Riva 1920. Many of its creations have received international design awards, among which the prestigious Red Dot, IF and Good design award.

A handwritten signature in white ink, reading "Claudio Francesco Bellini". The signature is stylized and fluid.

Claudio Francesco Bellini (Italy)

# Comfort and Breathable



## Design Concept

The main concept is a combination of Mesh Backrest and Soft Pad in a new and innovative way. The mesh gives all the advantages of a light material such as comfort and breathable element to user's sitting experience.

Optional Soft Pad in a lumbar area provides extra sitting comfort sensations. Well refined balance between sharp each curving and contour angles. Elegant silhouette and visual lightness is a perfect addition for a modern offices.

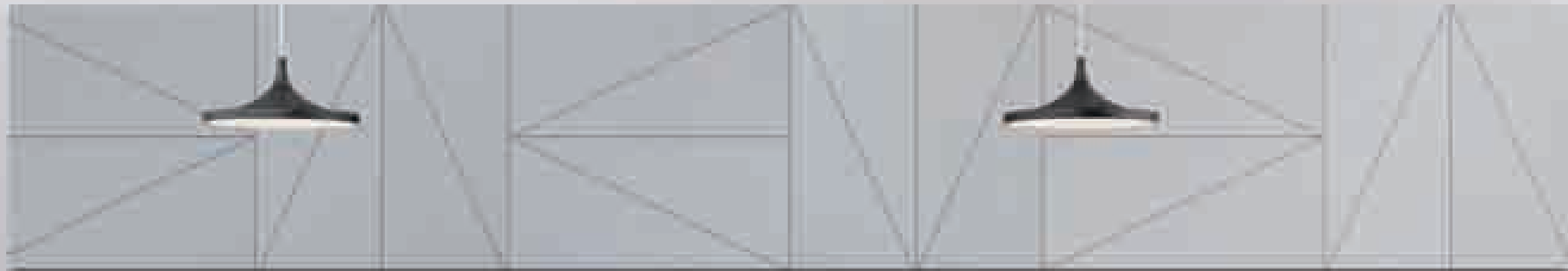
## Performance

LOOP Chair characterized by sharp clean lines, well-balanced proportions, and functionality.

It has a soft pad lumbar support, 3D adjustable armrests and wide range adjustable headrest to provide better ergonomic application. The aesthetics of the chair was inspired by the dynamism of automotive design with mixture of smooth and sharp lines.

Various textile combinations and elegant design makes LOOP Chair suitable for all areas of offices as well as for use in the home office.





# Extreme Comfort



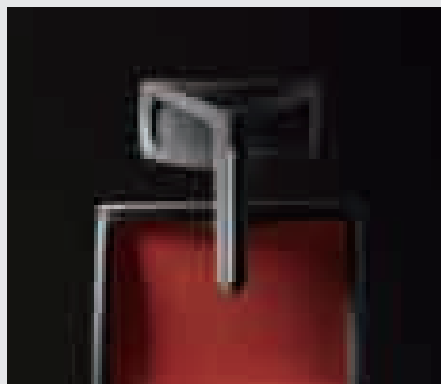
## Posture Fit

In daily life and work, people sit in various postures. The ergonomic design of LOOP Chair fits all your postures, wide range adjustable headrest, 3D armrest, 22° back tilting mechanism and high elastic mesh make LOOP Chair more humanize and interactive, it fully supports your body and offers you the extreme comfort experience.



## Lean Back with Comfort

The mechanism options for LOOP Chair are synchron mechanism and DONATI-Dopo weight sensitive mechanism. Seat-slider is attachable for both mechanisms to fit various postures.



## Height-adjustable Headrest with 18 Locking Positions

The engineering purpose of the headrest was to provide a wide range of height adjustment for people from all different height and size. The particular feature of this design is that headrest can overlap the back and provide ultra support also for the shorter users. The visual image of the headrest is clean, smooth and elegant. It comfortably embraces your head and can be easily adjusted according to your needs. Triangle style of the headrest resembles LOOP Chair and creates recognizable family image.



## 3D Armrest

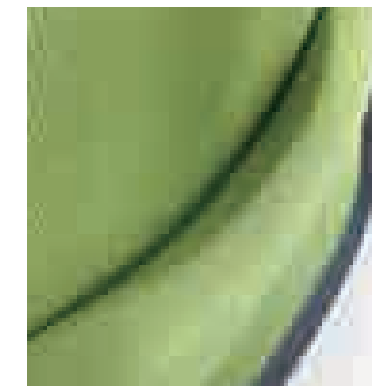
It's a breakthrough design for the construction of armrest support and interior device. It offers you the outstanding comfort experience with click rhythm and gentle feeling that soft PU pad provides.

- 9-position height adjustment (effective stroke:75mm)
- 7-position PU Pad forward and backward adjustment (effective stroke:40mm)
- 4-position PU Pad left and right adjustment (effective stroke:30mm)



## Environment Friendly Mesh & Seat Foam

The seat foam is long lasting high intensity molded foam, offers extraordinary comfort.



## Hug Feeling Support

Refined ergonomic design

The incline lumbar support, 45 degree bevel cut and curving design provide you stability and comfort in back tilting position.



## Craftsmanship

Embedded lumbar support seamlessly integrates with the mesh and back frame. The lumbar support is made of PP board and high intensity molded foam which make the lumbar support long lasting with great elasticity.

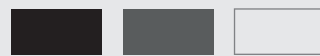
The decoration of gloss white painted plate with exquisite process for joint area combining with two different textures makes LOOP Chair more attractive.

# Colors

3 colors were selected for LOOP Chair . Grey is the most balanced neutral color, green and orange are hyper standout colors. This collection makes LOOP Chair more contemporary and fashionable that fits both open offices and modern home.



## Frame



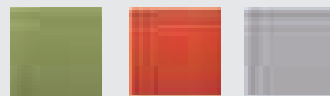
Grey Shell with white painting deco plus black name plate

## Headrest



PU0401  
Light Grey

## Backrest

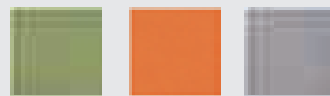


FB1403  
Green

FB1404  
Orange

FB1405  
Grey

## Lumbar Support

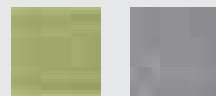


FC1707  
Green

FC1706  
Orange

FC1708  
Grey

## Seat



FC1801  
Green

FC1802  
Light Grey

# Flexible Solutions

## Armrest



Nylon Armrest/Grey



Aluminum Armrest/White painting

## Base



Nylon Base/Grey



Aluminum Base/White painting



Fixed Aluminum Base/White painting

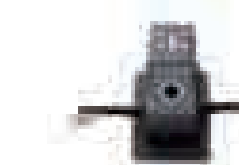


Sled Base/Black painting

## Mechanism



Synchron mechanism  
22° tilting angle  
with 3 locking positions



DONATI-Dopo weight sensitive  
mechanism, 21° tilting angle  
with 3 locking positions

## Slider

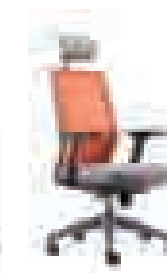


6-position Seat Slider,  
attachable to both mechanisms

# Various Versions



D00237SH



D00237SH



D00237RM



D00237RM



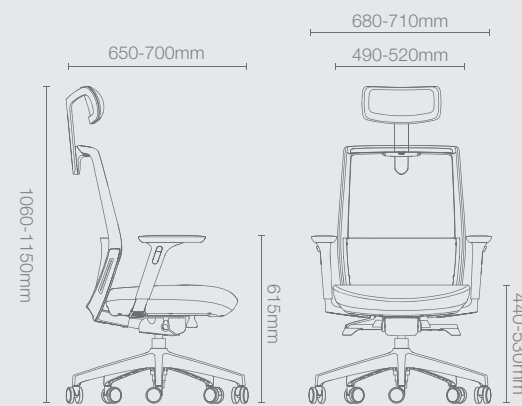
D00237RM



D00237E

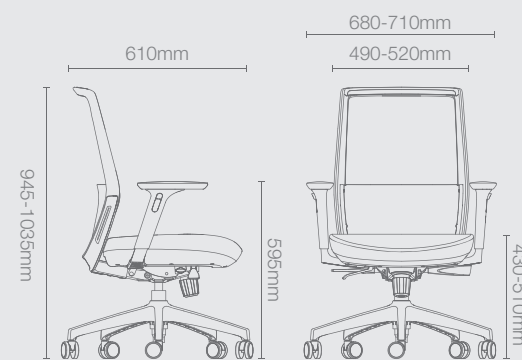


## Packing Details



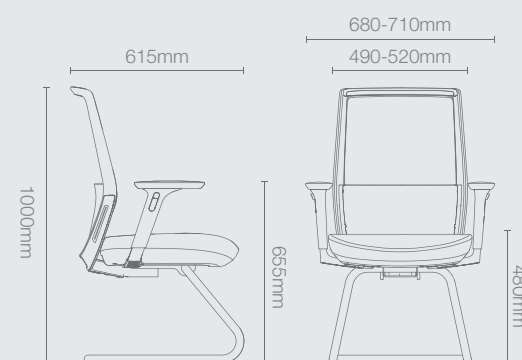
### D00237RH

**Carton Size:** 32"L\*12-3/4"W\*26"H  
**CBM:** 0.17  
**Packing:** 1pcs per carton  
**N.W.:** 21.0KG  
**G.W.:** 23.6KG  
**Loading:** 20GP:169PCS 40GP:348PCS  
 40HQ:400PCS



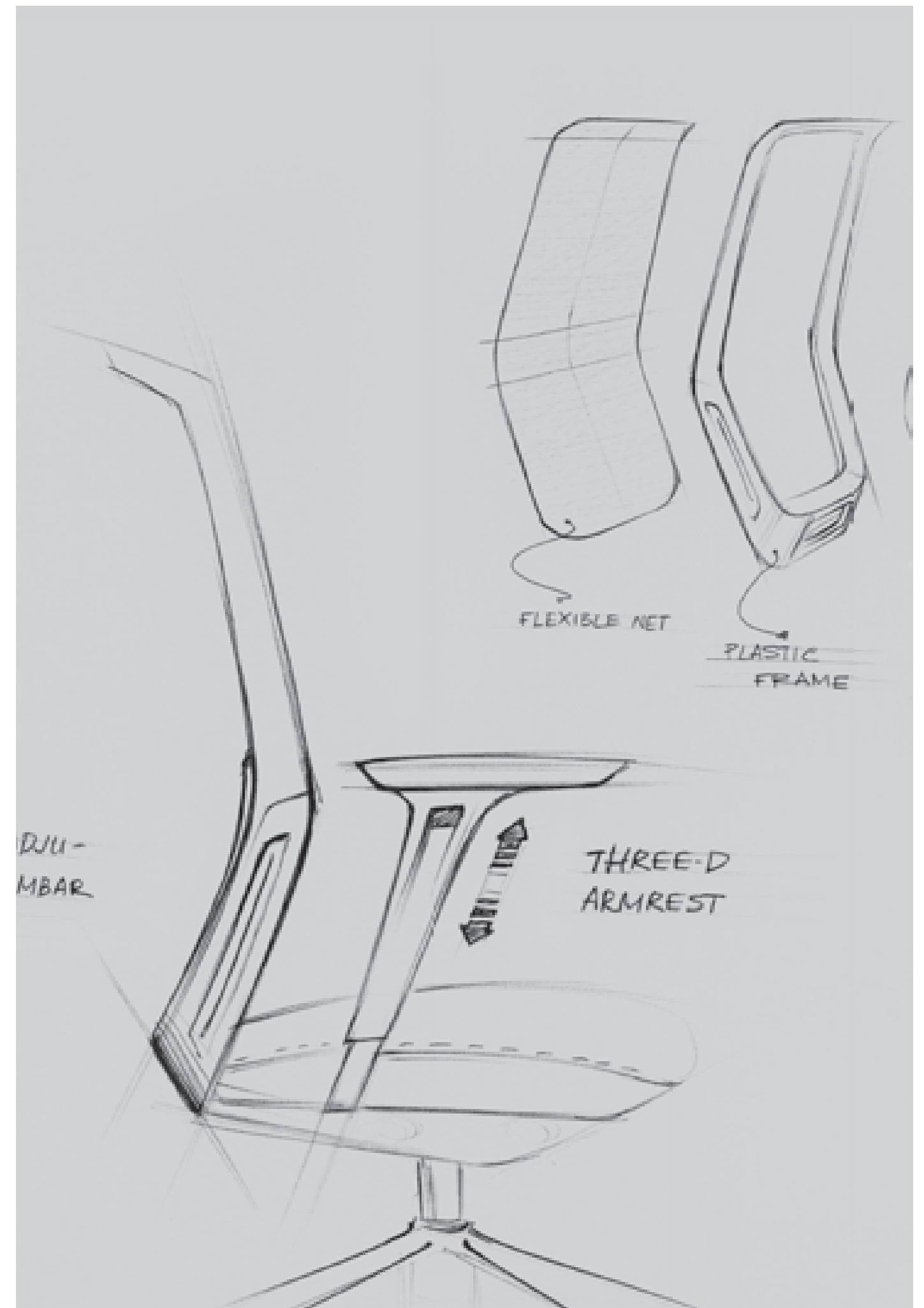
### D00237RM

**Carton Size:** 32"L\*12-3/4"W\*26"H  
**CBM:** 0.17  
**Packing:** 1pcs per carton  
**N.W.:** 20.0KG  
**G.W.:** 22.5KG  
**Loading:** 20GP:169PCS 40GP:348PCS  
 40HQ:400PCS



### D00237E

**Carton Size:** 27-1/2"L\*15-1/2"W\*21-1/4"H  
**CBM:** 0.15  
**Packing:** 1pcs per carton  
**N.W.:** 16.1KG  
**G.W.:** 18.1KG  
**Loading:** 20GP:192PCS 40GP:398PCS  
 40HQ:447PCS





All rights reserved. No part of this publication can be reproduced.  
Design and specification subject to possible modification without  
prior notice due to continuous product development.