

Design by COBD | www.cobd.cn



CHARM D00235

BIFMA  
INTERNATIONAL



All rights reserved. No part of this publication can be reproduced.  
Design and specification subject to possible modification without  
prior notice due to continuous product development.

版权所有，不得翻印。  
产品持续优化更新，以实物为准，设计与参数调整恕不另行通知。



# Comfortable

舒适的工作椅

一把舒适的座椅对久坐群体的工作质量有着深远的影响。Charm 是经典的工作椅，具有旋转、倾仰和高度调节等功能。设计师在座椅模型的每一处进行了反复雕琢，以精致的细节和材料的提升，使Charm座椅在性能和舒适度上均达到了较高的标准，让您从坐下工作的一刻开始就感觉到了舒适。

On the basis of inheriting classic design, the Charm chair has enhanced its comfort and aesthetics to the extreme. Designers repeatedly carved the seat model, headrest and lumbar support, producing the most comfortable experience than ever. Double back frames, removable headrest, new 4D armrest, synchron mechanism, pressure releasing seat foam...Each detail of Charm has reflected the supreme craftsmanship of the design concept.





### 30CM 宽大曲面头枕 30cm wide surface headrest

升级版头枕具有更高的支撑力、回弹力、柔软度给头部带来一种自然的舒适承托，更有效的缓解颈椎疲劳。

The upgraded headrest with higher supportability, elasticity, flexibility brings to the head & neck natural and comfortable support, more effective to alleviate fatigue.

### U型可翻转腰托，舒适承托 U shape flexible lumbar support

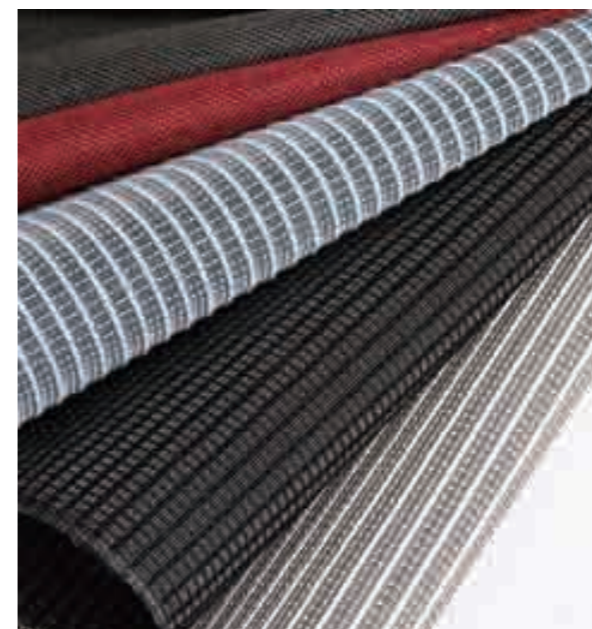
弧形PU腰托设计、根据人体的腰部重量贴合部位自由翻转、能有效缓解腰部疲劳。

The natural curve design of PU lumbar support turns freely according to the body weight and alleviate waist fatigue effectively.

### 140度大角度可躺午休功能 140° with rest function

使用DOPO自负重底盘，根据人体重量力度后仰时智能调节椅背倾仰力度，不用调动任何装置，能带来更好的舒适性和用户体验感。

Applied with DOPO mechanism which adjusts the seat tilting degree according to the tension of the body weight without any extra device, bringing a better sense of comfort and user experience.



### 优质韩国网布、高弹耐磨 High quality South-Korean Mesh, high elastic and durable

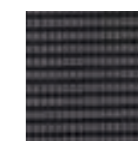
采用韩国高端网布Nordic Flocking系列、高回弹更强韧，承重和透气性也更加。

High quality Nordic Flocking series mesh from South-Korea is with high elasticity and durability, and better permeability.

#### 背网 Back



FB1601



FB1602

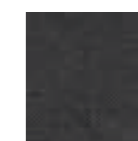


FB1603

#### 座布 Seat



FC1301



FC1302

### 流瀑型前沿 Waterfall edge design

分散腿部压力、有效缓解久坐疲劳。

Disperse legs stress and relieve sedentary fatigue.

### 原生环保海绵 Environmental friendly foam

75MM成型泡棉、环保健康，久坐不易塌陷。通过美国加州防火标准。

75mm thickness molded foam, environmental friendly and long lasting. CA117 standards.

### 高密度座布 High density fabric

通过马丁代尔耐磨测试——3万次循环。Martindale abrasion test: 30,000 cycle.



## 扶手外观结构创意 Armrest Design

圆形的升降按键，立体切面扶手杆，细节的设计，彰显设计美学，4D功能，灵活支撑手臂动作，给不同身高与坐姿的使用者最舒适的手臂承托，缓解肩部疲劳。

Round shape height adjustment buttons, armrest bar, all details display the aesthetics of design. 4D functional armrests moves flexibly for different height and position of the user to alleviate shoulder fatigue.

9-position height adjustment, effective stroke: 80mm  
3-position left-right adjustment in a 16.5-degree angle  
5-position front-back adjustments, effective stroke: 35mm  
60mm width adjustment  
Optional: 3D armrests is available  
(Armrest height adjustable and arm pad adjustable)



## 多款底盘配置、自由互换 Interchangeable mechanism

Charm座椅有三款可以互换的底盘选配，提供不同的功能调节、通过底盘与扶手的变换、适用于不同需求的用户。

Charm has three interchangeable mechanisms which provide with different functional regulation. Through the changes of different mechanism and armrests to satisfy different needs of users.

### Dopo自负重底盘 D00235H001 Donati-Dopo Weight Sensitive Mechanism

21°后仰调节/3档锁定  
21°tilting angle/ 3 locking



### F135B5-G 联动底盘自带滑盘 D00235M002 F135B5-G Synchro Mechanism with Seat slide

22°后仰调节/3档锁定6档滑动/行程40mm  
22° tilting angle/ 3 locking plus 6 sliding/40mm stroke



### NG022 简单联动底盘 D00235M003 NG022 Simple Synchro Mechanism

21°后仰调节/原始档位锁定  
21° tilting angle/original locking



### F135B5 蝴蝶联动底盘 D00235M004 F135B5 Synchro Mechanism

22°后仰调节/3档锁定  
22° tilting angle/ 3 locking

## 尺寸&装柜量 Packing Details

D00235H  
Carton Size: 32-1/2"L\*12-3/4"W\*26"H CBM:0.176  
Loading: 20GP:170PCS 40GP: 342PCS 40HQ:392 PCS

D00235M  
Carton Size: 32-1/2"L\*12-3/4"W\*26"H CBM:0.176  
Loading: 20GP:170PCS 40GP: 342 PCS 40HQ:392 PCS

D00235E  
Carton Size: 27-1/2"L\*15-1/2"W\*21-1/4"H CBM:0.148  
Loading: 20GP:192PCS 40GP:398PCS 40HQ:447PCS